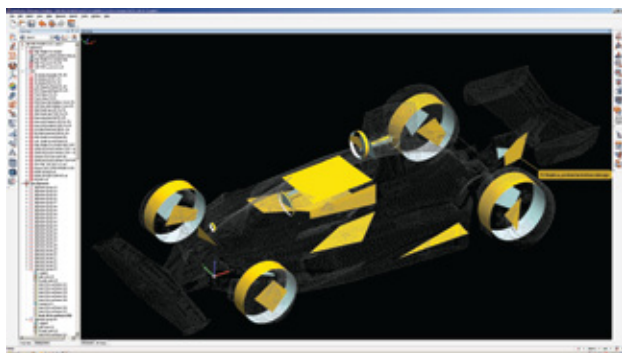
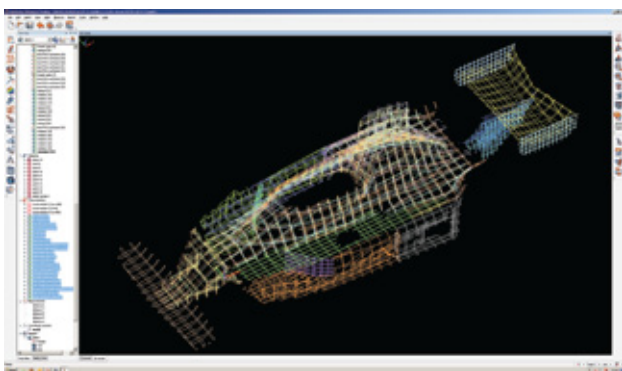




PolyWorks used to re-create Niki Lauda's Ferrari for Ron Howard's New Film RUSH



Above:
Screenshots
showing the cross
sections in
PolyWorks
software.
Left: The clay

At the beginning of the project there was no original car available to scan, so in order to get the project underway, scale models of the cars were scanned.

After the data had been processed using PolyWorks software an original chassis of the 312T/312T2 became available. The key location points on the chassis were probed allowing 3D Scanners to scale the processed polygon mesh of the car so that it would match the probed locations exactly. Once 3D Scanners were happy with the model, cross-sections were then taken using PolyWorks Inspector.

A full scale clay was created from our model and the original chassis, in order to produce a fibreglass body. An aluminium front and rear wing was produced from the PolyWorks cross-sectional data. The project was then complete.

