

DELL Precision mobile workstation users

Configuring your graphics card to maximize the PolyWorks graphics performance

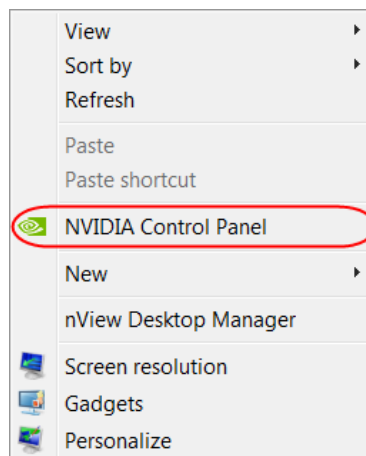
If you use a DELL Precision mobile workstation (laptop) with both an integrated and an NVIDIA Quadro graphics card, the default configuration of your laptop may not allow using the full potential of the PolyWorks graphics performance.

The following procedure explains how to verify which graphics card is used on your laptop and, if necessary, how to change the current configuration.

Verifying the graphics card setting

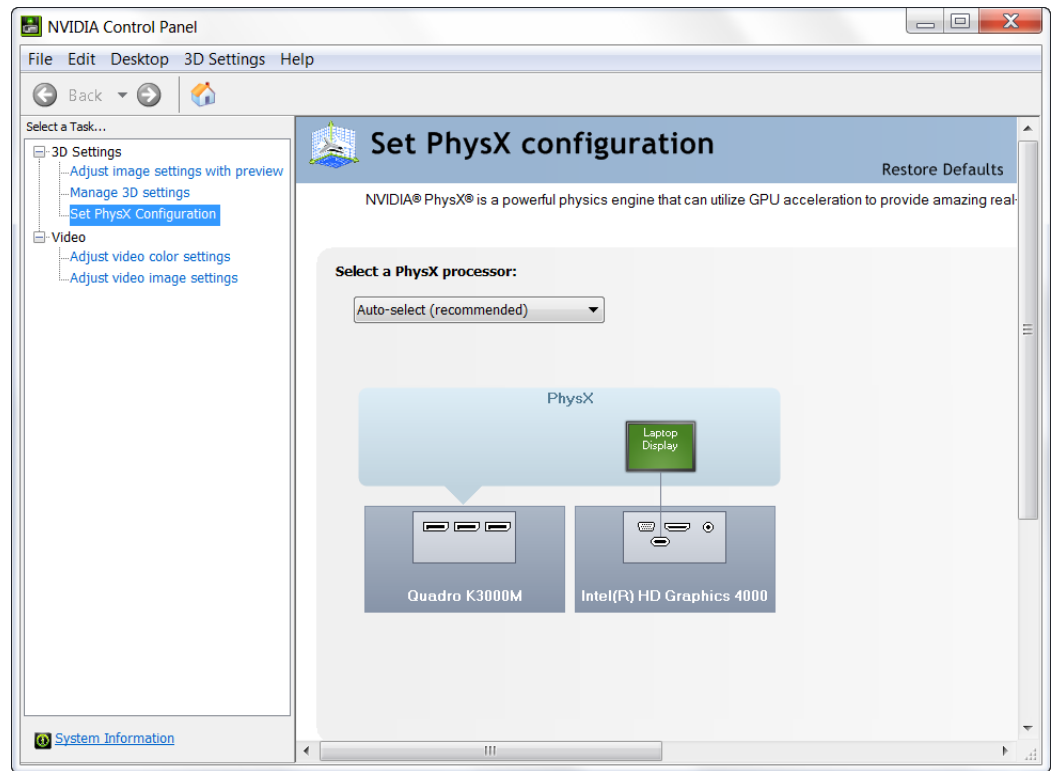
To verify which graphics card is used on your laptop:

1. Unplug any external monitor from your laptop.
2. Right-click on your desktop and select **NVIDIA Control Panel**.



3. From the NVIDIA Control Panel navigation tree pane, under **3D Settings**, click **Set PhysX Configuration**.

The following window displays.



4. Make sure that the laptop display is linked to the NVIDIA Quadro graphics card (for example, **Quadro K3000M**). If it is linked to the Intel® graphics card (as shown above), proceed with the following steps to change the graphics card setting.

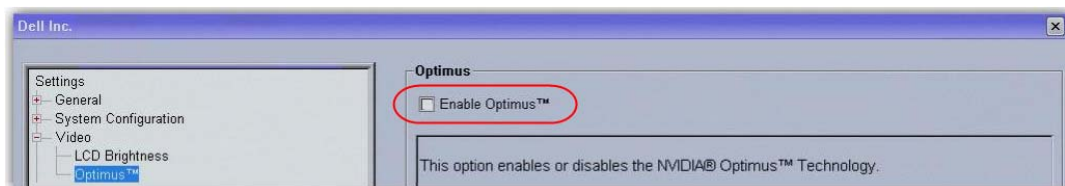
Changing the graphics card setting

To switch from the integrated to the NVIDIA Quadro graphics card:

1. Restart your laptop, then press F2 at boot time (when the Dell logo is displayed) to boot your laptop into BIOS.

The Dell setting window displays.

2. From this window, under **Video**, click **Optimus™**.
3. Uncheck the **Enable Optimus™** option.



4. Click **Apply**, then **Exit**.

Your laptop will reboot.

5. Wait while Windows installs the NVIDIA driver, then reboot your laptop again.
6. Verify if the NVIDIA Quadro graphics card is now selected using the “Verifying the graphics card setting” procedure in this document.

PolyWorks® is a registered trademark of InnovMetric Software Inc. All product names mentioned in this publication are trademarks of their respective owners.

InnovMetric Software Inc. does not assume any legal liability or responsibility for any damage or loss that may directly or indirectly result from the information contained in this document.