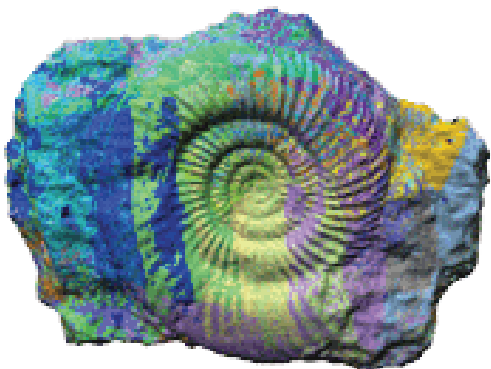


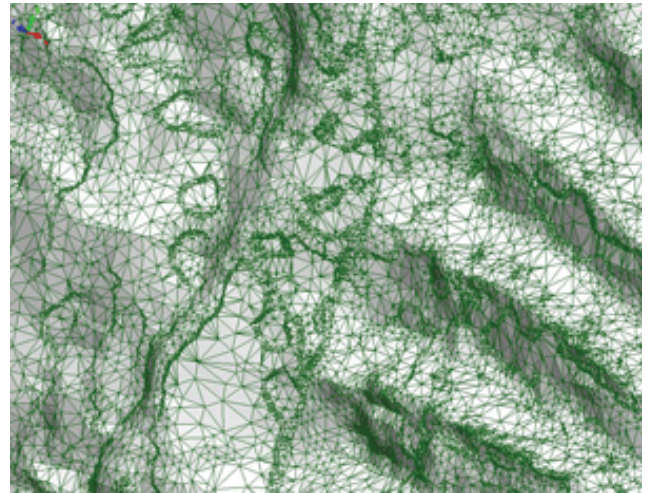
3D Scanners UK scan & create polygon Ammonite model

The fossil was 3d scanned at 3D scanners site in Coventry using a laser arm scanner and aligned within Innovmetric Polyworks Modeler software.

The image below shows the raw data. The scanned image is made up of many coloured stripes, representing the stripes of the laser scanner.



The organised point cloud data was then meshed in PolyWorks Software. The PolyWorks software selects the best overlapping data to create a polygon model.



The image above shows a close up of the mesh.

Result : An stl model for producing a prototype or use as a 3d catalogue visual display.

